

AUTO—SHARPENING CUTTING MACHINE

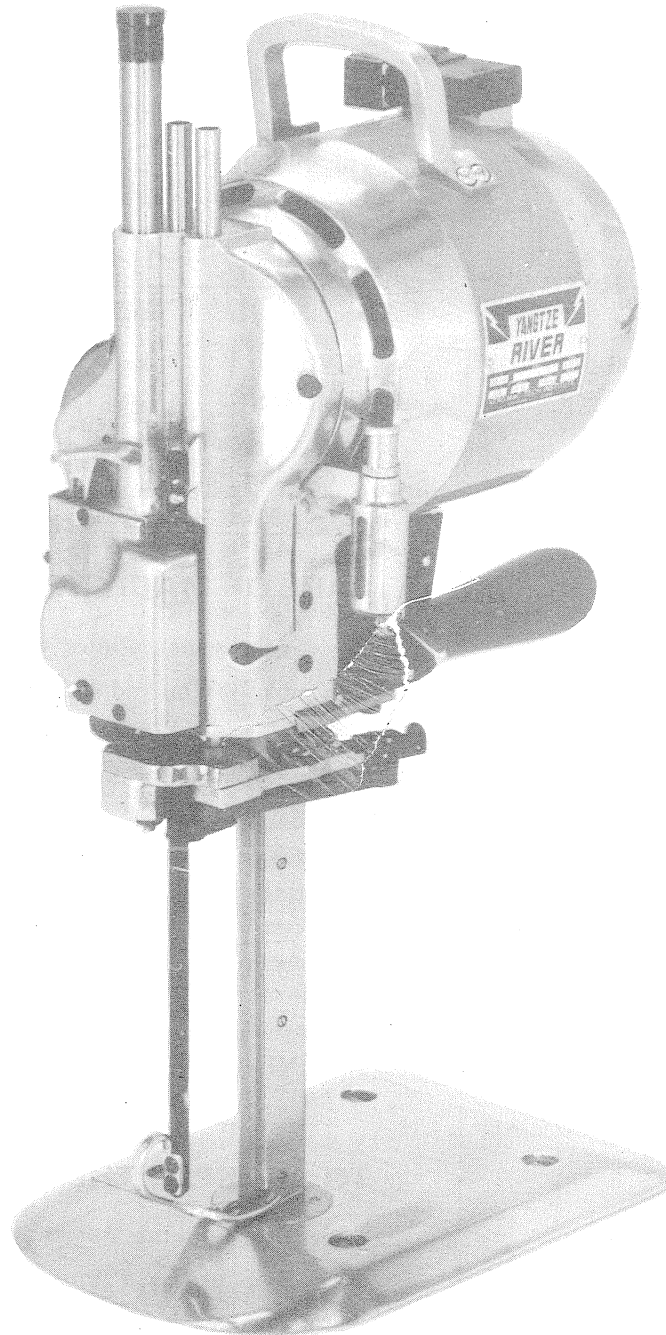
model

DC-3A

IMPORTANT

This part book contains instruction and part number for the machine.

When ordering parts please specify machine part NO. and name.



CAUTION

Machine Equipped
with
Sharp Blade

From the library of: Diamond Needle Corp

INSTRUCTION BOOK AND PARTS LIST

Shanghai China

使用, 加油 和维护

使用前请仔细阅读

使用前

应确认电源电压与标牌所标一致(220/110V)

应向油杯内加油;将电机后的旋钮推入转几转,刀片应能上下灵活移动。

—— 注意 ——

当心刀片快口伤人。操作时请使用木手柄推动机器,搬动机器时,请使用提手柄。

维护

(1)每星期两次用风管或风箱把马达和磨刀器上的绒头吹掉。(2)每星期一次取下前盖将丝杆上的绒头弄干净。(3)每天至少一次取下刀片,用槽子清洗器将刀槽清理干净。(4)请勿向底板滚轮加油。(5)若轮子滚不动,请拆下清洗。

—— 注意 ——

未装刀片时切勿磨刀,以免造成机器损坏。

磨刀时

请放下压脚,用力慢慢地按下磨刀手柄。如果太快,可能导致压脚轧死。如果轧死,请抬起拨叉,重新再来几次后,你便会知道怎样的轻重最适合。

Operation, Lubrication and care

Before operating machine, read this page carefully.

Before operating the motor, be sure that electric supply voltage and current are the same as stamped on the nameplate. (220/110V)

Fill oil cup. Push in turning knob and turn the machine over a few revolutions by hand to see if the knife moves easily.

WARNING

This machine is equipped with a sharp knife. Keep hands away from the knife area all the time. Use control levers and handles only when operating or handling machine.

CARE OF MACHINE

Use air hose or bellows with proper eye shields and blow lint out of motor and sharpener twice a week. Remove cover over cam and clean out lint around screw mechanism in sharpener once a week. Remove knife and clean slides with slot cleaner at least once a day. To prevent undue accumulation of lint, do not oil plate rollers. If rollers stick, remove from plate and wash in cleaning solvent.

WARNING

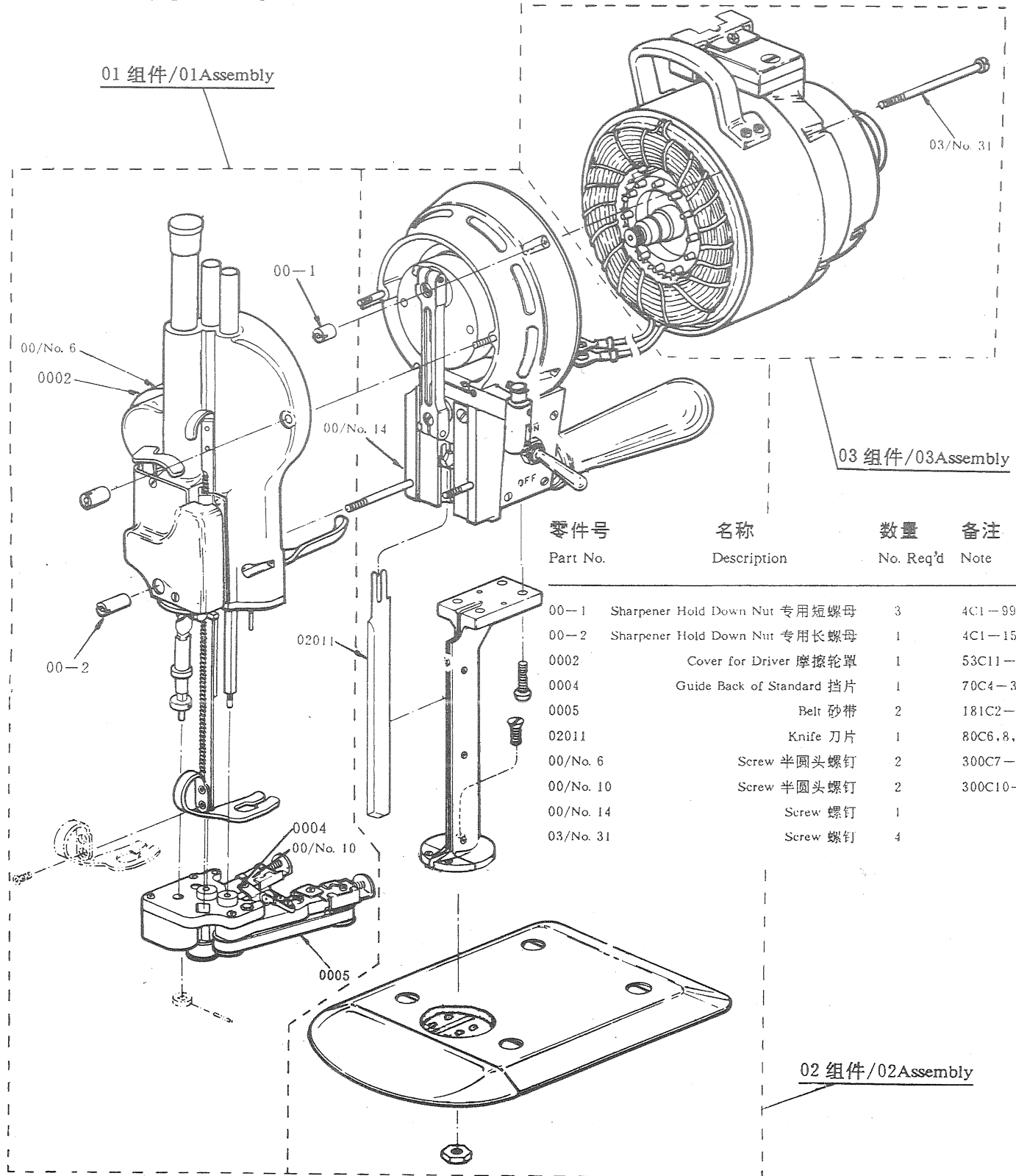
Do not operate sharpener without knife in machine or the sharpener will be damaged.

TO SHARPEN THE KNIFE

Take the machine out of the lay. Drop pressure foot by means of pressure foot lever located next to machine operating handle. Press release lever downward with a slow, firm pressure to engage in sharpening mechanism. Too fast lever action may cause lever to lock. If this occurs, lift latch lever and start again. After a few tries you will feel correct operating pressure.

零件的 图解目录

Illustrated Parts List



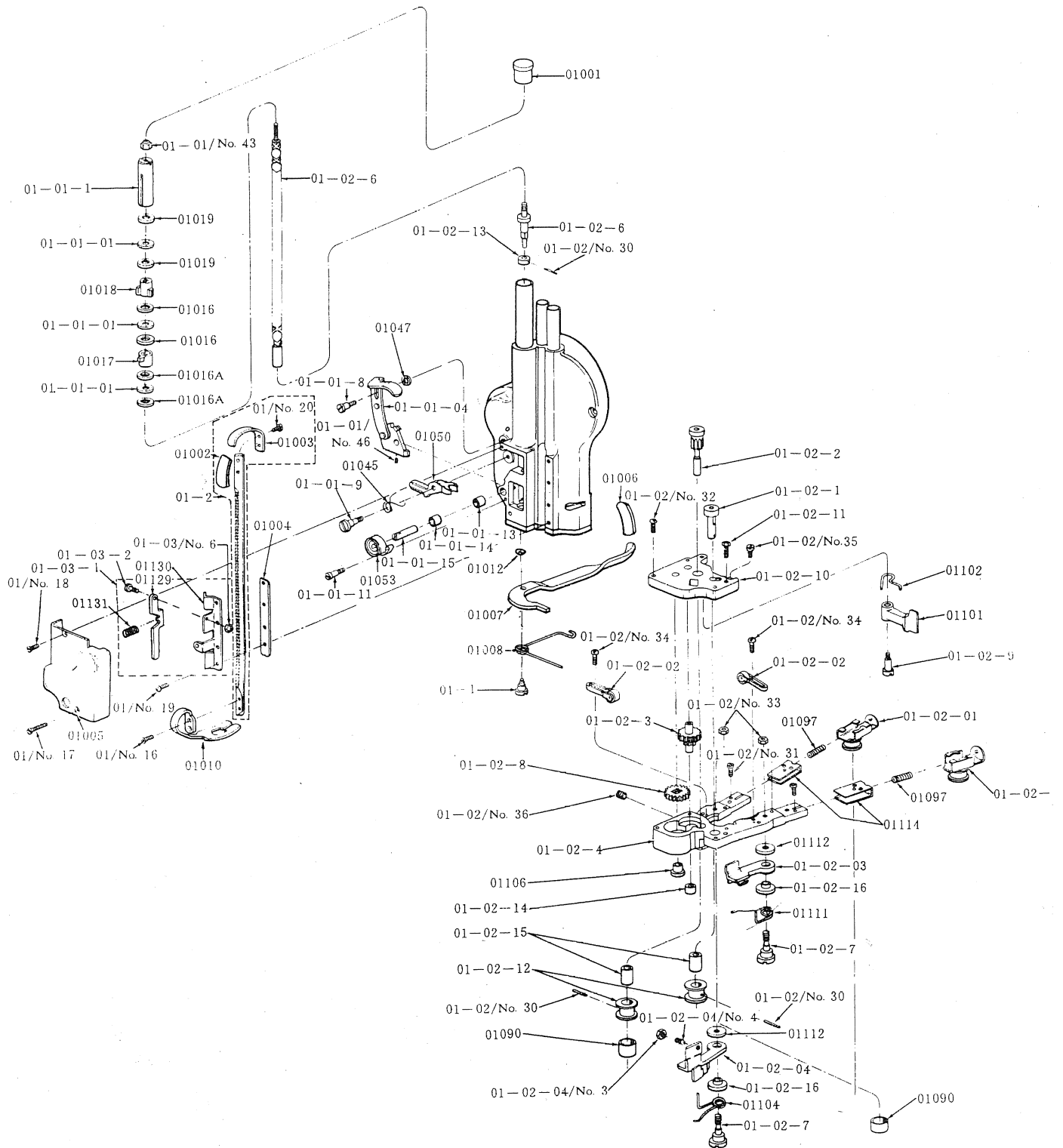
零件号 Part No.	名称 Description	数量 No. Req'd	备注 Note
00-1	Sharpener Hold Down Nut 专用短螺母	3	4C1-99
00-2	Sharpener Hold Down Nut 专用长螺母	1	4C1-150
0002	Cover for Driver 摩擦轮罩	1	53C11-60
0004	Guide Back of Standard 挡片	1	70C4-32
0005	Belt 砂带	2	181C2-1,2
02011	Knife 刀片	1	80C6,8,10
00/No. 6	Screw 半圆头螺钉	2	300C7-2
00/No. 10	Screw 半圆头螺钉	2	300C10-2
00/No. 14	Screw 螺钉	1	
03/No. 31	Screw 螺钉	4	

From the library of: Diamond Needle Corp

组件的 零件目录

Assembly Illustrated Parts List

零件号 Part No.	名称 Description	数量 No.	备注 Req'd Note	零件号 Part No.	名称 Description	数量 No.	备注 Req'd Note
01-01-01	Thrust Ball Bearing 轴承组件	3	71c3-15	01010	Pressure Foot Shoe 压脚	1	68c1-192
01-01-04	Release Lever with Cam 磨刀手柄组件	1	621c1-7	01012	Spring Washer 弹性圈	1	
01-02-01	Slide with Pulley 滑动小轮组件	2	712c1-1	01016A	Thrust washer for Nuts 轴承片	1	12c15-74
01-02-02	Stabilizer 紧定滚轮组件	2	728c1-5	01016	Thrust washer for Nuts 轴承片	3	12c15-74
01-02-03	R. H. Pre-set Sharpener Shoe 右磨刀垫组件	1	743c1-28	01017	R. H. Nut for Screw Shaft 右向螺母	1	4c2-112
01-02-04	L. H. Pre-set Sharpener Shoe 左磨刀垫组件	1	743c1-29	01018	L. H. Nut for Screw Shaft 左向螺母	1	4c2-113
01-1	Pressure Foot Lever Screw 放松手柄螺钉	1	20c4-17	01019	Thrust Washer—Upper Nut 轴承片	2	12c15-91
01-2	Knife Guard Rod 压脚杆	1	605c1-35, 36, 37	01045	Spring for Latch 拨叉弹簧	1	34c10-107
01-01-1	Nut for Screw Shaft 丝杆上螺母	1	73c7	01047	Spring Washer for Release Lever 弹性垫圈	1	12c15-57
01-01-8	Screw for Release Lever 磨刀手柄活动螺钉	1	20c12-156	01050	Latch for Cam 拨叉	1	97c3-35
01-01-9	Screw for Latch 拨叉定位螺钉	1	20c12-113	01053	Cam Spring 锁紧法条	1	34c1-20
01-01-11	Cam Shaft Spring Screw 发条销限位螺钉	1	20c12-13	01090	Neoprene Band for Pulley 传动小轮橡胶套	2	209c1
01-01-13	Bearing for Cam Shaft 发条销下轴衬	1	90c4-47	01097	Spring for Pulley Slide 滑动小轮弹簧	2	34c10-45
01-01-14	Bearing for Cam Shaft 发条销上轴衬	1	90c4-47	01101	Clamping Arm for Shoe 夹紧臂	1	35c7-28
01-01-15	Shaft for Cam 发条销	1	11c12-54	01102	Spring for Arm 夹紧臂弹簧	1	34c10-123
01-02-1	R. H. Shaft Extension 滑轮轴	1	147c1-28	01104	L. H. Sharpener Shoe Spring 左弹簧	1	34c10-148
01-02-2	L. H. Shaft Extension 8 牙齿轴	1	157c1-29	01106	Bearing for Screw Shaft 双向丝杆衬套	1	90c4-51
01-02-3	Intermediate Gear 双联齿轮	1	87c5-13	01111	R. H. Sharpener Shoe Spring 右弹簧	1	34c10-149
01-02-4	Lower Gear Bracket with Cover 磨刀架	1	715c1-19	01112	Washer 磨刀垫螺钉垫片	4	12c15-94
01-02-6	Screw Shaft 双向丝杆	1	11c12-95, 96	01114	Wear Plate 耐磨板	2	79c12-218
01-02-7	Screw for Sharpener Shoe 磨刀垫螺钉	2	20c12-152	01129	Lock for Pressure Foot 压脚定位板	1	171c1-16
01-02-8	Gear on Screw Shaft 24 牙齿轮	1	87c3-50	01130	Knife Guard Lock Bracket Only 支持衬子	1	553c1-8
01-02-9	Screw for Clamping Arm 夹紧臂螺钉	1	20c12-143	01131	Spring for Knife Guard Lock 护齿弹簧	1	34c8-12
01-02-10	Gear Cover 磨刀架盖板	1	53c4-78	01/No. 16	Screw for Pressure Foot Shoe 沉头螺钉	2	20c12-117
01-02-11	Adjusting Screw 磨刀架盖板螺钉	1	20c6-25	01/No. 17	Screw 沉头螺钉	1	302c10-8
01-02-12	Front Pulley for Belt 传动小轮	1	152c1-19	01/No. 18	Screw 沉头螺钉	1	302c10-4
01-02-13	Collar for Extension 双向丝杆挡圈	1	5c5-16	01/No. 19	Screw 半圆头螺钉	4	300c10-4
01-02-14	Bearing for Intermediate Gear 双联齿轮衬套	1	90c4-47	01/No. 20	Screw 半圆头螺钉	2	300c10-1
01-02-15	Bearing for Shaft Extension 传动小轮衬套	2	90c4-59	01-01/No. 43	Stop Nut for Screw Shaft 锁紧螺母	1	4c1-149
01-02-16	Bushing for Sharpener Shoe 磨刀垫螺钉衬套	2	21c13-17	01-01/No. 46	Set Screw for Cam 圆柱端紧定螺钉	1	309c15-7
01-03-1	Knife Guard Lock Bracket Complete 压脚托架	1	553c1-8	01-02/No. 30	Roll Pin 弹性圆柱销	3	17c15-106
01-03-2	Screw for Knife Guard Lock 护齿螺钉	1	20c12-137	01-02/No. 31	Screw 圆柱头螺钉	2	301c7-2
01001	Cap of Tube 塑料帽	1	86c7-34	01-02/No. 32	Screw 半圆头螺钉	3	300c10-6
01002	Cover for Lift Handle 提手塑套	1	53c11-103	01-02/No. 33	Nut for Sharpener Shoe Screw 六角螺母	2	4c2-63
02003	Lift Handle for Knife Guard Rod 压脚杆提手柄	1	22c3-2	01-02/No. 34	Screw 半圆头螺钉	4	300c7-3
01004	Spacer for Knife Guard Lock Bracket 护齿托架垫片	1	55c4-49	01-02/No. 35	Screw 半圆头螺钉	1	301c10-3
01005	Cover Over Cam 前罩	1	53c11-72	01-02/No. 36	Grease Plug 平端紧定螺钉	1	54c4-35
01006	Vinyl Cover for Pressure Foot Lever 压脚放松手柄塑料套	1	53c11-104	01-02-04/No. 3	Jam Nut 小六角较扁螺母	1	4c1-189
01007	Pressure Foot Lever 压脚放松手柄	1	57c7-39	01-02-04/No. 4	Stop Screw 内六角锥端紧定螺钉	1	309c12-2
01008	Spring for Pressure Foot Lever 放松手柄弹簧	1	34c10-100	01-03/No. 6	Nut for Pressure Foot Lock 锁紧螺母	1	4c1-161

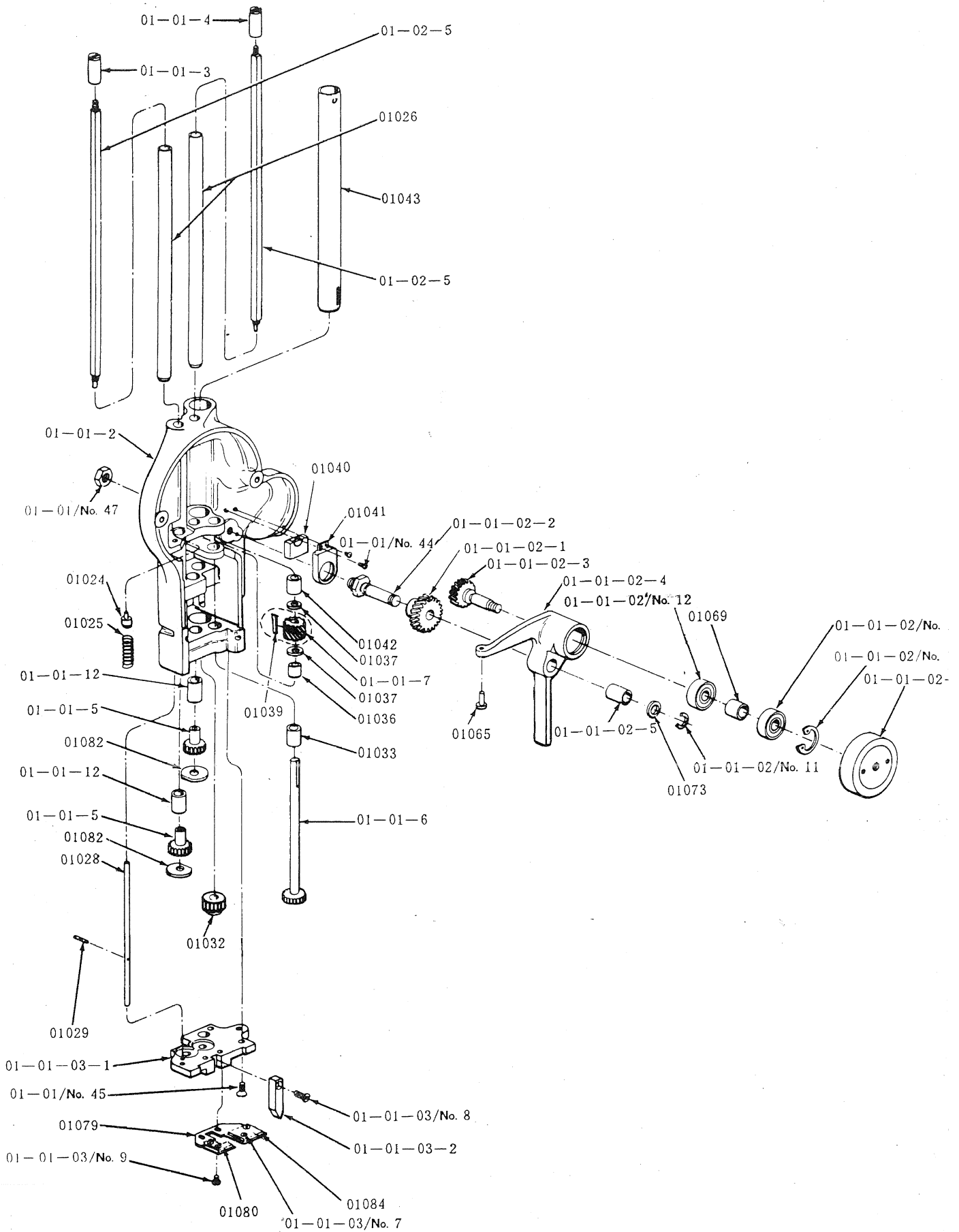


From the library of: Diamond Needle Corp

组件的 零件目录

Assembly Illustrated Parts List

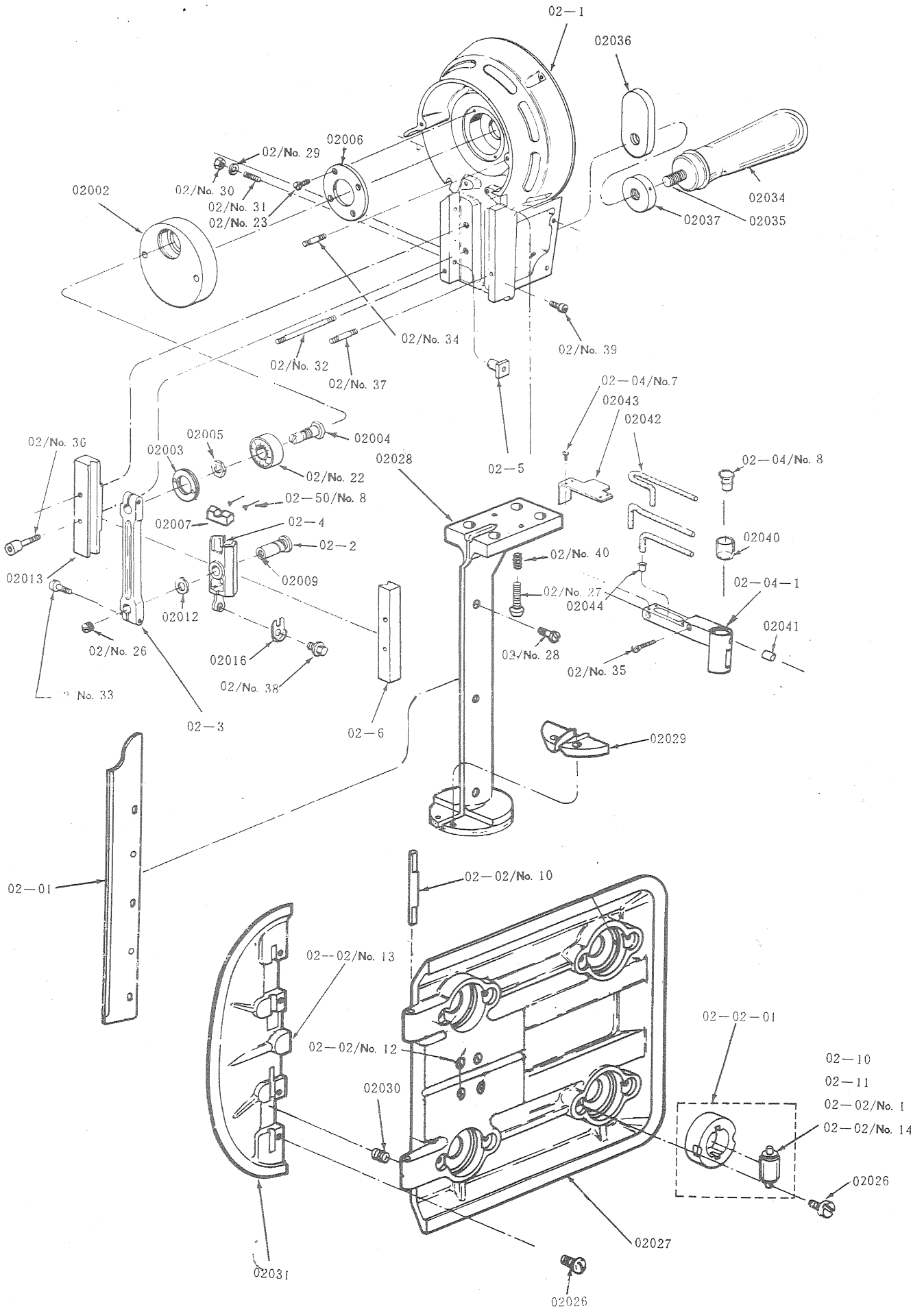
零件号 Part No.	名称 Description	数量 No.	备注 Req'd Note	零件号 Part No.	名称 Description	数量 No.	备注 Req'd Note
01-01-02-01	Driver Pulley with Driver 摩擦轮组件	1	602c1-9	01033	Bearing for Drive Shaft 齿轮传动杆下轴衬	1	90c4-29
01-01-2	Sharpener Housing 磨刀机匣	1	62c16-151	01039	Key 键	1	142c1-7
01-01-3	R. H. Follower Nut 随动螺母	1	4c2-85	01040	Felt Pad for Oil Retainer—Idler Gear 从动斜齿轮油盖毛毡	1	191c1-34
01-01-4	L. H. Follower Nut 随动左螺母	1	4c2-86	01041	Oil Retainer—Idler Gear 从动斜齿轮油盖	1	71c1-10
01-01-5	Spur Gear 20 牙齿轮	2	87c3-44	01042	Bearing for Drive Shaft 斜轮传动杆上轴衬	1	90c4-48
01-01-6	Driver Shaft with Gear 齿轮传动杆	1	716c1-12	01043	Tube for Screw Shaft 丝杆管套	1	73c7-48,49
01-01-7	Spiral Gear 15 牙斜齿轮	1	87c3-8	01065	Pin for Bell Crank 顶针	1	17c15-78
01-01-12	Bearing for Gears 20 牙齿轮轴衬	2	90c4-33	01069	Spacer for Bell Bearings 斜齿轮轴衬圈	1	55c4-41
01-01-02-1	Idler Gear 斜齿轮	1	87c3-40	01073	Washer for Shaft 垫片	1	12c15-52
01-01-02-2	Shaft for Crank 斜齿轮轴	1	11c12-64	01079	Oil Pad and Holder 油垫座	1	727c1-6
01-01-02-3	Gear and Shaft 斜齿轮轴	1	87c3-53	01080	L. H. Oil Pad 油垫座左垫毡	1	
01-01-02-4	Bell Crank 斜齿轮传动机匣	1	85c3-6	01082	Thrust Washer for Bottom Plate 底板座垫圈	2	12c15-30
01-01-02-5	Bearing for Bell Crank 斜齿轮芯 轴衬套	1	90c4-34	01084	R. H. Oil Pad 油垫座右垫毡	1	
01-01-03-1	Bottom Plate 磨刀机匣底板	1	79c2-163	01-01/No. 44	Screw 半圆头螺钉	2	300c7-1
01-01-03-2	Spreader Pin 分隔块	1	17c15-113	01-01/No. 45	Screw 沉头螺钉	3	302c10-3
01-02-5	Square Shaft 方导杆	2	11c12-56, 57	01-01/No. 47	Lock Nut for Shaft 六角扁螺母	1	4c2-2
01024	Pin for Sharpener Housing 推杆档桩	1	17c15-82	01-01-02/No. 11	Retaining Ring for Shaft 轴用弹性挡圈	1	18c6-8
01025	Spring for Bell Crank 支撑弹簧	1	34c10-89	01-01-02/No. 12	Ball Bearing for Crank 单列向心球轴承	2	90c6-24
01026	Tube for Square Shaft 方导杆管套	2	73c7-46, 47	01-01-02/No. 13	Retaining Ring for Bell Crank 孔用弹性挡圈	1	18c6-26
01028	Push Rod 推杆	1	65c6-75	01-01-03/No. 7	Rivet 空心铜铆钉	4	
01029	Roll Pin for Push Rod 推杆定位销	1	17c15-103	01-01-03/No. 8	Screw 沉头螺钉	1	302c10-6
01032	Bearing for Screw Shaft 丝杆轴套	1	90c4-58	01-01-03/No. 9	Screw 半圆头螺钉	2	300c10-1
01036	Bearing for Drive Shaft 齿轮传动杆中轴衬	1	90c4-42				
01037	Thrust Washer 15 牙斜齿轮垫圈	2	12c15-29				



组件的 零件目录

Assembly Illustrated Parts List

零件号 Part No.	名称 Description	数量 No.	备注 Req'd Note	零件号 Part No.	名称 Description	数量 No.	备注 Req'd Note
02-01	Knife Slide 刀壳组件	1	643c1-41, 43, 47	02036	Handle Bracket 力板	1	
02-1	Front Bearing Housing 前机匣	1	90c2-139	02037	Operating Handle Lock Nut 木手柄锁紧螺母	1	
02-2	Wrist Pin 从动销	1	17c4-6	02040	Glass Tube 油杯窗	1	
02-3	Connecting Rod 连杆	1	664c1	02041	Oil Tube Plug 油塞	1	
02-4	Cross Head 中心滑块	1	579c2-17	02042	Long Wicking 油绳	3	
02-5	Guide Adjustment Nut 支撑螺套	3	4c3-8	02043	Cover for Oil Tube 油杯座盖板	1	
02-6	R. H. Guide 右导轨	1	525c1	02044	Eyelet 空心铆钉	1	
02-04-1	Oil Tube 油杯座	1		02/No. 22	Bearing 单列向心球轴承	1	
02002	Crank 偏心轮	1		02/No. 23	Screw 沉头螺钉	4	
02003	Crank Ball Bearing, Lock Nut 轴承挡圈	1		02/No. 24	Needle Pin 大头针	2	
02004	Shaft for Ball Bearing 传动销	1		02/No. 25	Retaining Ring for Shaft 轴用弹性挡圈	1	
02005	Lock Nut for Shaft 传动销螺母	1		02/No. 26	Screw 平端紧定螺钉	1	54c4-32
02006	Front Ball Bearing Retainer 前机匣轴承挡圈	1		02/No. 27	Screw 圆柱头内六角螺钉	4	
02007	Felt Pad for Cross Head 滑动块毛毡垫	1		02/No. 28	Screw 圆柱头螺钉	3	
02009	Long Wicking 从动销毛毡	1	191c1-38	02/No. 29	Washer 垫圈	9	
02012	Connecting Rod Washer 垫片	1	12c15-53	02/No. 30	Nut 螺母	3	4c2-91
02013	L. H. Guide 左导轨	1	525c1	02/No. 31	Screw 内六角平端紧定螺钉	3	309c15-5
02016	Knife Lock Washer 固定刀垫片	1	12c1-24	02/No. 32	Stub, upper 双头螺栓	1	15c13-34
02-02-01	Rubber Mounted Roller 橡胶安装座组件	4	532c2-5	02/No. 33	Screw 圆柱头内六角螺钉	2	20c5-17
02-10	Swivel Roller Assembly 底板滚棒轴	4	619c1-31	02/No. 34	Stub, lower 双头螺栓	1	15c13-23
02-11	Swivel Roller Assembly 底板滚棒衬套	4	619c1-31	02/No. 35	Screw 沉头螺钉	2	302c8-2
02-02/No.1	Swivel Roller Assembly 滚针	40	619c1-31	02/No. 36	Screw 圆柱头内六角螺钉	6	308c14-1
02-02/No.14	Swivel roller Assembly 垫圈	8	619c1-31	02/No. 37	Stub, lower 双头螺栓	1	15c13-39
02026	Clamp Screw for Roller 底板压轴螺钉	12		02/No. 38	Screw 方头螺钉	1	24c1-3
02027	Plate 底座	1	2494404	02/No. 39	Screw 圆柱头内六角螺钉	2	20c13-14
02028	Standard 立柱	1		02/No. 40	Stainless Steel Inserts Jam Type 螺纹丝套	4	
02029	Throat Plates 脚板	2		02-02/No. 10	Hinge Pin 导板连接轴	2	
02030	Plate Wing Spring 导板弹簧	1		02-02/No. 12	Screw 十字槽沉头螺钉	4	
02031	Plate Wing 导板	1	2494414	02-02/No. 13	Pin 圆柱销	1	
02034	Operating Handle 木手柄	1		02-04/No. 7	Screw 半圆头螺钉	4	300c3-2
02035	Screw for Operating Handle 木手柄螺钉	1		02-04/No. 8	Oil Hole Cover 油杯	1	

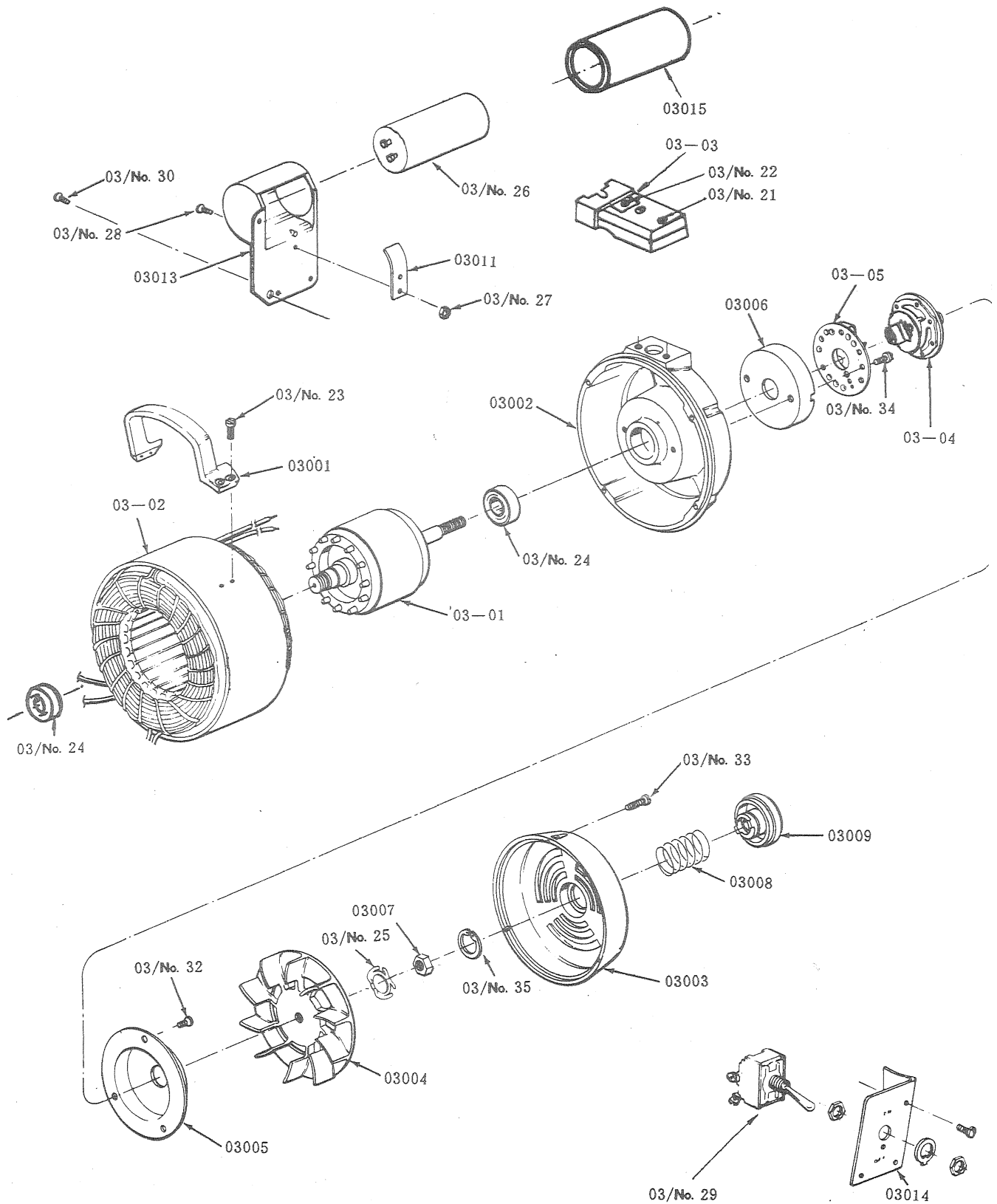


From the library of: Diamond Needle Corp

组件的 零件目录

Assembly Illustrated Parts List

零件号 Part No.	名称 Description	数量 No.	备注 Req'd Note	零件号 Part No.	名称 Description	数量 No.	备注 Req'd Note
03-01	Rotor with Shaft 电机转子组件	1		03014	Switch Base 开关盖	1	
03-02	State with Band 电机定子组件	1		03015	Cover for Capacitor 电容器外套	1	
03-03	Terminal Block 插头组件	1		03/No. 21	Screw 沉头螺钉	1	
03-04	Automatic Cutout Switch 离心开关组件	1		03/No. 22	Screw 圆柱头螺钉	1	
03-05	Automatic Cutout 离心开关切断器	1		03/No. 23	Screw 十字槽盘头螺钉	4	
03001	Carrying Handle 提手柄	1		03/No. 24	Rear Ball Bearing 单列向心球轴承	2	
03002	Rear Bearing Housing 后机匣	1		03/No. 25	Loading Spring Washer 止动垫圈	1	
03003	Fan cover 风轮盖	1		03/No. 26	Capacitor 启动电容	1	
03004	Rotor Fan 风轮	1		03/No. 27	Shaft Lock Nut 六角螺母	1	
03005	Cover for Cutout 离心开关盖	1		03/No. 28	Screw 半圆头螺钉	1	
03006	cutout Switch Mount 离心开关罩	1		03/No. 29	Switch 电机开关	1	
03007	Clutch Nut 电机轮子螺母	1		03/No. 30	Screw 球面圆柱螺钉	6	
03008	Clutch Spring 弹簧	1		03/No. 32	Screw 十字槽盘头螺钉	2	
03009	Turning Knob 旋钮	1		03/No. 33	Screw 十字槽盘头螺钉	2	
03010	Shaft Cover 轴套	1		03/No. 34	Screw 十字槽盘头螺钉	2	
03011	Spring for Capacitor 电容压板	1		03/No. 35	Retaining Ring 轴用弹性挡圈	1	
03013	Capacitor Cover 电容器罩	1					



From the library of: Diamond Needle Corp

常见的故障原因及处理方法

Another Cares of Machine

- | | |
|--|--|
| <p>1. 磨刀器放不下</p> <p>① 零件(01-01-02-01)沾到油,用布擦干净。</p> <p>② 零件(01025)坏了,换新的。</p> <p>③ 零件(01-01-02-01)磨损,换新的。</p> <p>2. 磨刀器落下</p> <p>磨刀架内齿轮和丝杆无油脂,加油脂。</p> <p>3. 刀片切不动</p> <p>① 砂带(0005)坏了,换新的。</p> <p>② 砂带磨不到刀片,调整螺丝(02-02-7)。</p> <p>③ 刀片已磨到底,换新的。</p> <p>④ 磨刀角度左右不平均,调整左、右磨刀垫(01-02-03,04)。</p> <p>4. 起动不良</p> <p>① 马达内有杂物,修理或清除。</p> <p>② 刀壳(02-01)内部烧坏或有烧焦物,换新的。</p> <p>③ 电压太低,量电压是否正常。</p> <p>④ 电线太长,所用电线不要超过四米。</p> <p>⑤ 用油不好,换用随机的润滑油。</p> <p>5. 机器表面带静电</p> <p>插头未接地,将插头接地。</p> | <p>1. Sharpener does not drive</p> <p>① Driver pulley (01-01-02-01) is oiled. Clean it please.</p> <p>② Spring (01025) damaged. Change a new one please.</p> <p>③ Driver pulley (01-01-02-01) damaged. Change a new one please.</p> <p>2. Sharpener falls down easily</p> <p>Remove Screw (01-02/No. 36)and Squeeze some grease into opening.</p> <p>3. Machine does not cut easily</p> <p>① Belts (0005) damaged, change new Belts Please.</p> <p>② Belts can not sharpen Knife, adjust Screw (02-02-7) please.</p> <p>③ Knife damaged, change a new one please.</p> <p>④ Bevel on both sides of Knife is not approximate, adjust Sharpener Shoes (01-02-03, 04) please.</p> <p>4. Motor can not be running.</p> <p>① Clear or repair Motor Please.</p> <p>② Knife Slide damaged, change a new one please.</p> <p>③ Electric supply voltage is not correct.</p> <p>④ Electric supply wire of machine is too long, don't be longer than 4 m please.</p> <p>⑤ Use the oil following the machine or 30 weight non-detergent oil please.</p> <p>5. Existing of electricity on the appearance</p> <p>Please Connect Attachment Plug with ground.</p> |
|--|--|

10"、8"、6"

不同尺寸零件表

Different Size Parts List

图号 Part No.	名称 Description	尺寸规格 Size		
		10"	8"	6"
01011	Knife Guard Rod 压脚杆	364	314	314
01026	Tube for Square Shaft 方导杆管套	245	195	195
01043	Tube for Screw Shaft 丝杆管套	244	194	194
01099	Square Shaft 方导杆	297	247	247
01100	Screw Shaft 双向丝杆	369	319	269
02-01	Knife Slide 刀壳组件	269	219	169
02011	Knife 刀片	294	244	194
02028	Standard 立柱	274	224	174
02036	Handle Bracket 力板	专用	/	/
M6×10/GB67-76	Screw 半园头螺钉	专用	/	/
M10×16/GB68-76	Screw 沉头螺钉	专用	/	/